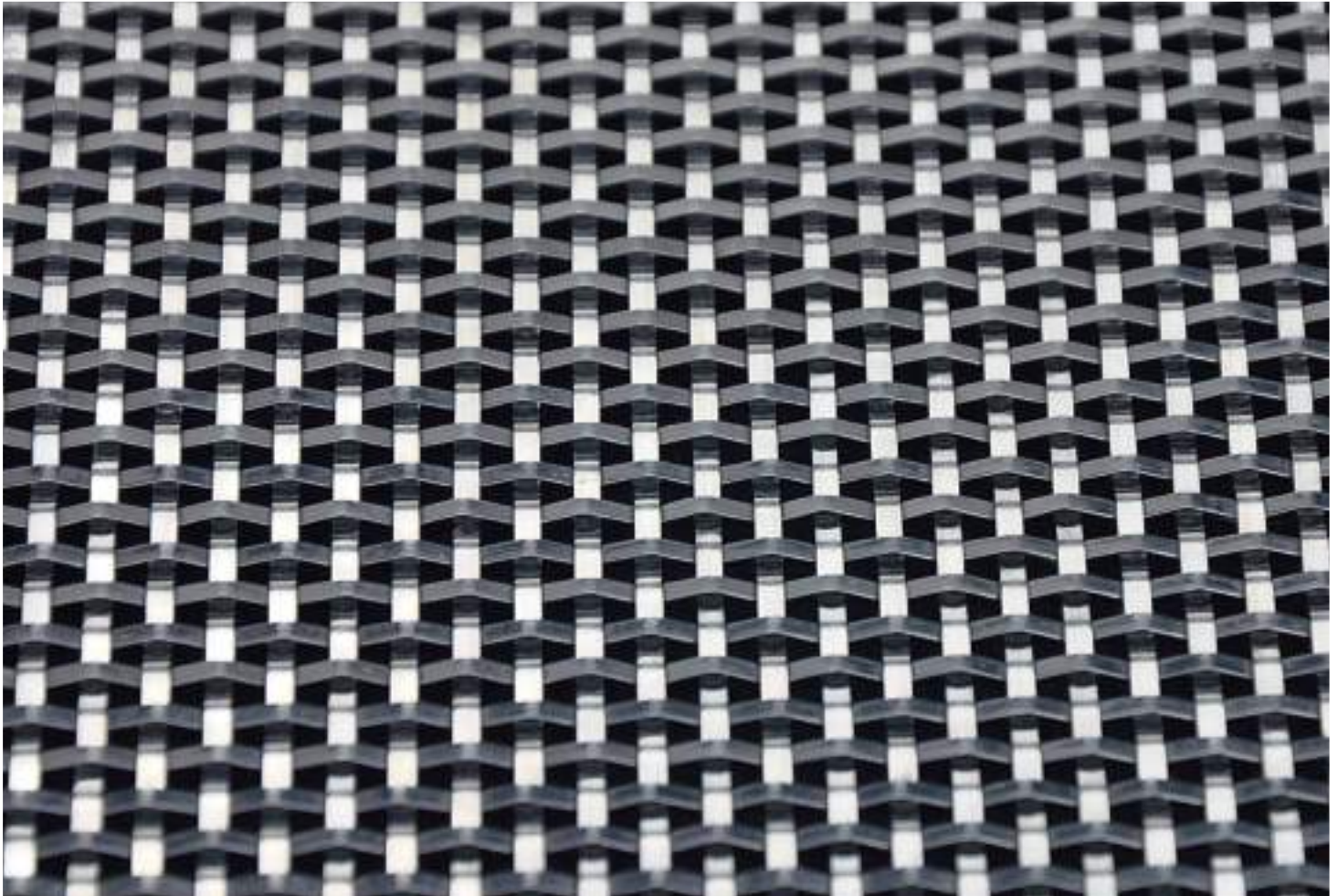




**MARIANItch**<sup>TM</sup>  
ARCHITECTURAL SOLUTIONS

## STRIPES



### Dati tecnici -Technical data

Nome Name	Luce Opening [mm]	Vuoto/Pieno Open Area [mm]	Spessore finale. Total thickness [mm]	Materiale Material	Peso Weight [Kg/mq]	H max Max width [mm]
Stripes XS	3 x 3	25%	2	Aisi 304/316	8	3000
Stripes XL	7 x 7	17%	3	Aisi 304/316	10,8	3000